

UINTAH COUNTY REC DISTRICT

PARK MASTER PLAN UPDATE

KAY MEMORIAL & ASHLEY VALLEY PARK

AUGUST, 2022

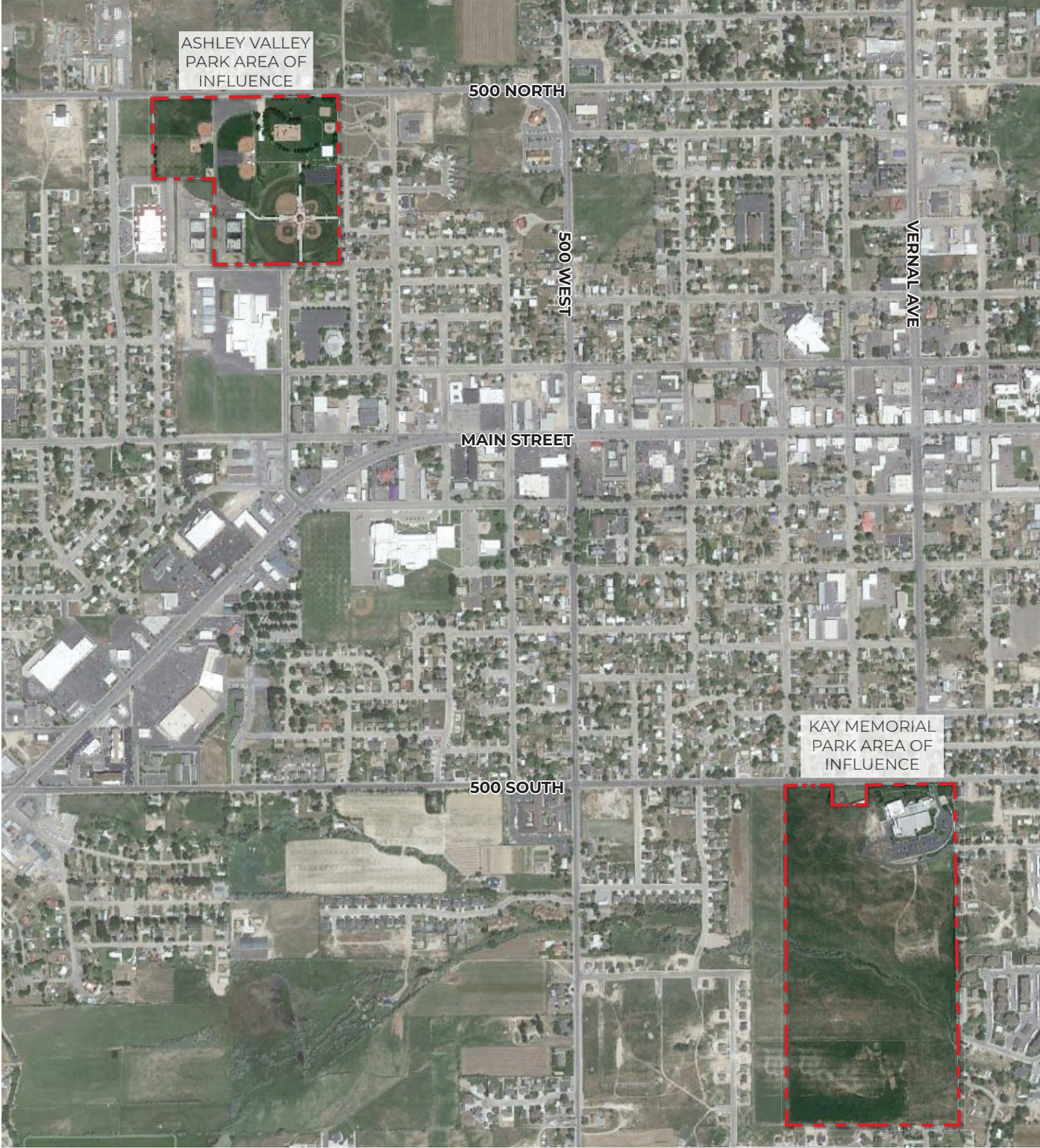


Jones & DeMille
Engineering



PSOMAS

Vicinity Map



Uintah County Recreation District

Parks Master Plan Update

Kay Memorial Park - Overview

The Kay Memorial Park currently is mostly undeveloped. Feedback from the prior Parks Master Plan Update was utilized as well as other public engagement efforts

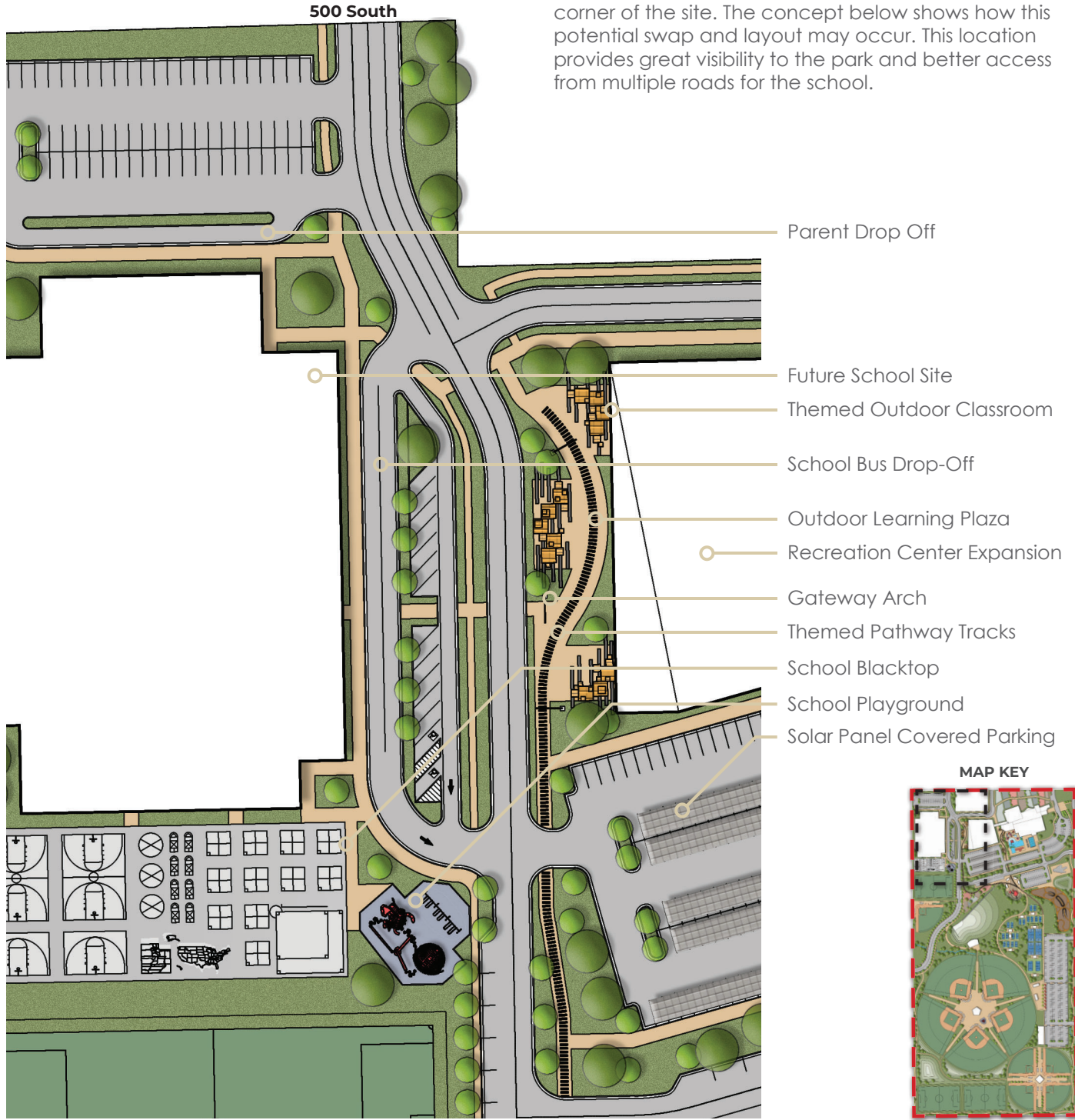
previously completed for Vernal City. This feedback was integrated into the specific amenities and theme outlined below.



Kay Memorial Park - Future School Property

The 13-acre area in the south east corner of the overall park is currently owned by the Uintah School District. The location created potential safety and access issues

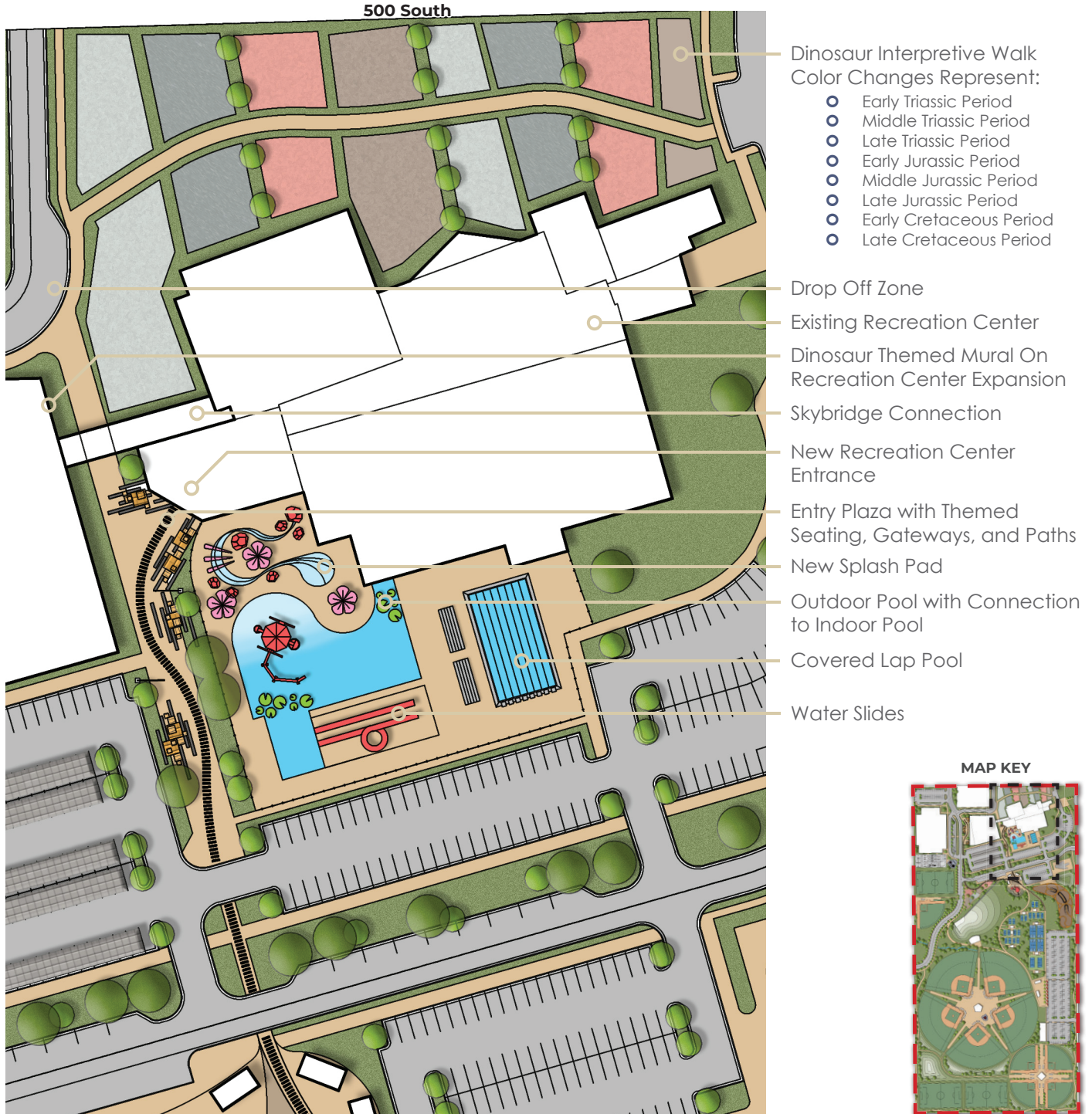
for the park and the school. Discussions were held with the School and the Recreation District to potentially swap land moving the school into the north west corner of the site. The concept below shows how this potential swap and layout may occur. This location provides great visibility to the park and better access from multiple roads for the school.



Key Memorial Park - Improvements for Existing Center

It was critical to integrate the existing Uintah Community Center building and its surroundings with the proposed park design theme and concept.

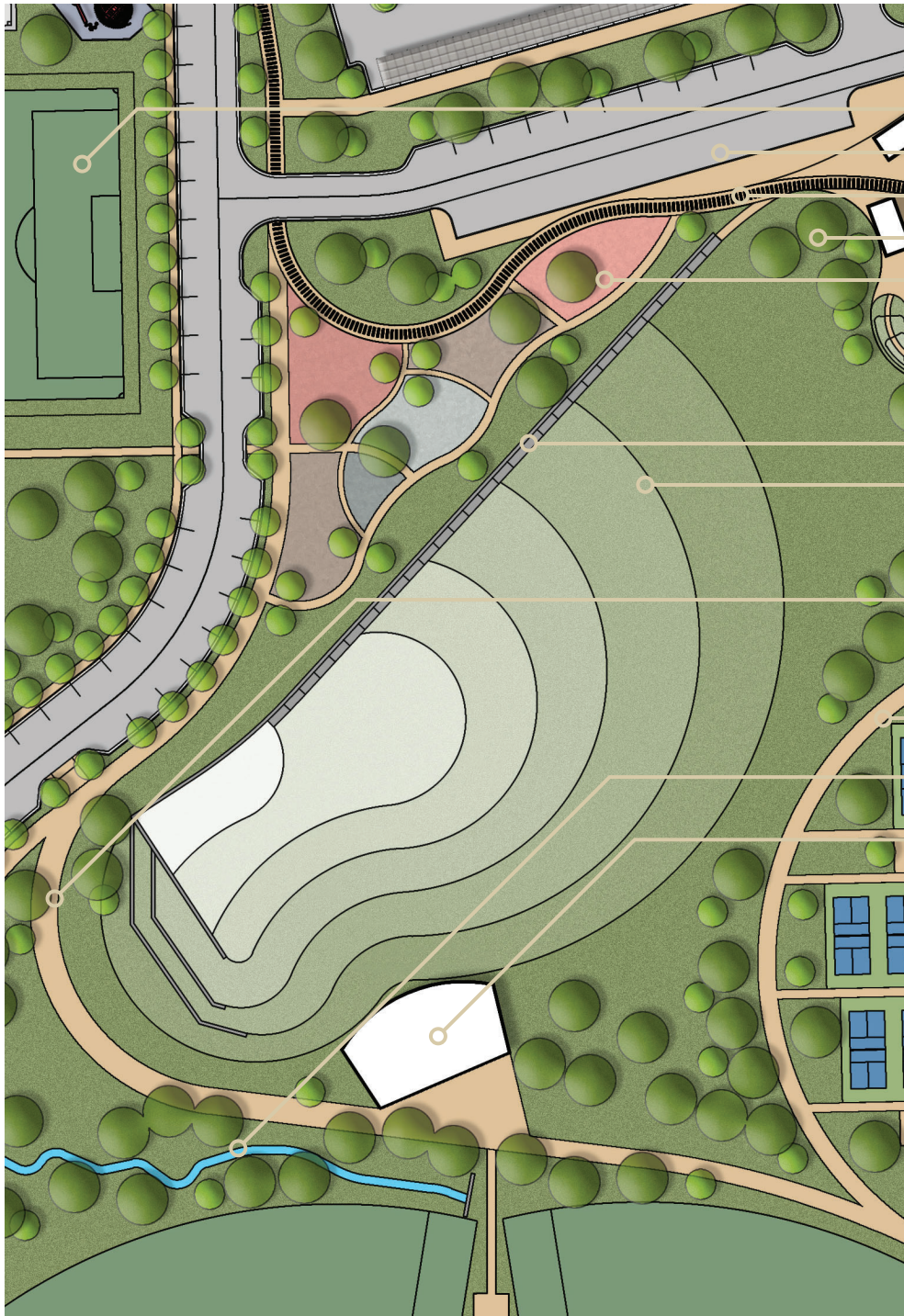
Measures were taken to expand the building and create a safer more desirable entry that would service the existing building and its potential expansion.



Kay Memorial Park - Botanical Garden & Amphitheater

With the update of the Parks Master Plan it was essential to include a wide range of amenities in the Kay Memorial Park which would allow residents

diverse recreational opportunities. Among the more undeserved amenity types were passive recreation and a large centralized community gathering space.



- Multi-Use Field
- Food Truck Parking & Plaza
- Themed Pathway Tracks
- Hammock Park
- Botanical Garden
- Hill Ramp
- Amphitheater Seating & Sledding Hill
- 15' Multi-use Trail & Equipment Access
- 10' Multi-use Trail
- Faux Stream Bed
- Amphitheater Stage 40' by 80'

MAP KEY



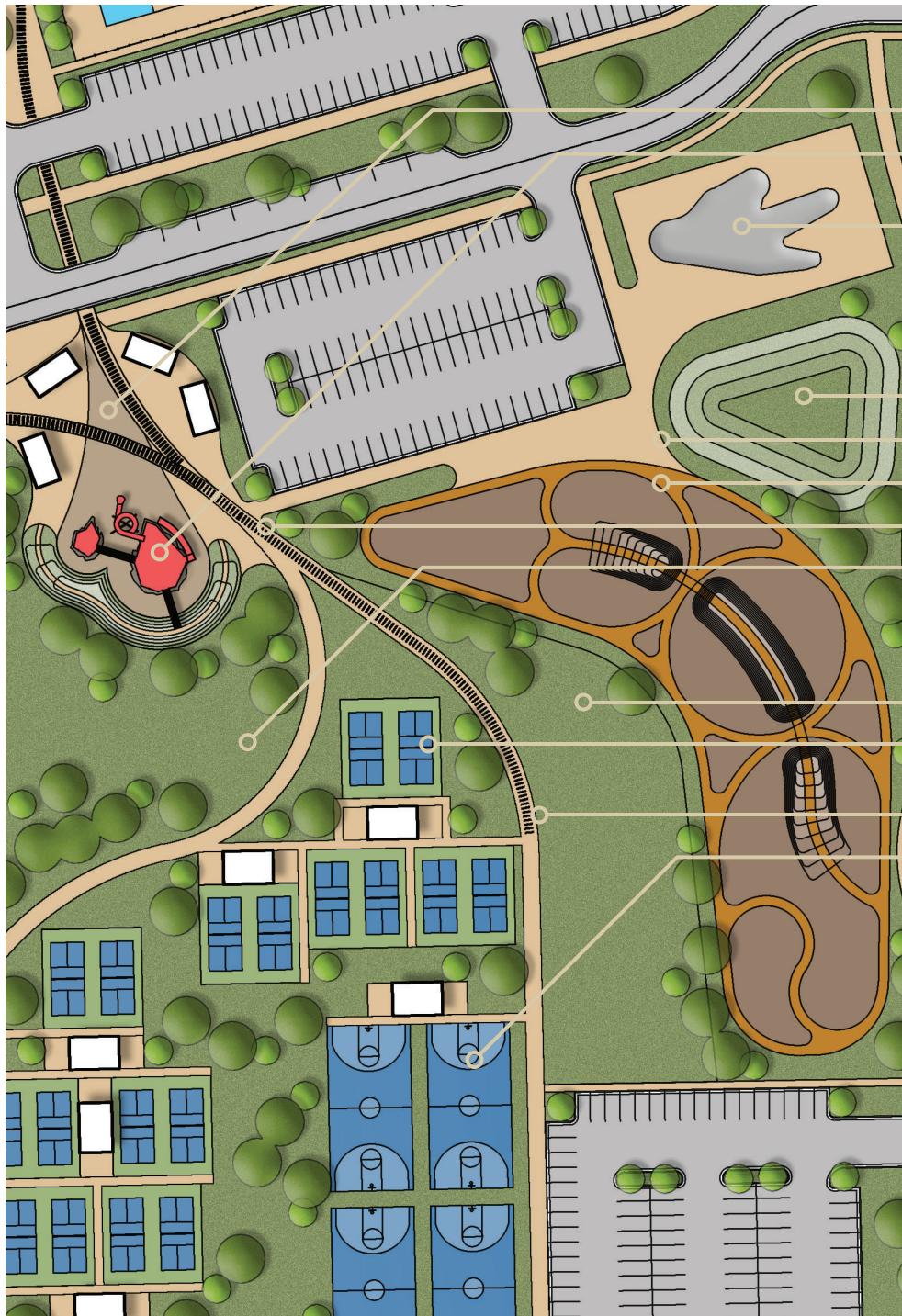
Uintah County Recreation District

Parks Master Plan Update

Kay Memorial Park - Active / Passive Activities Areas

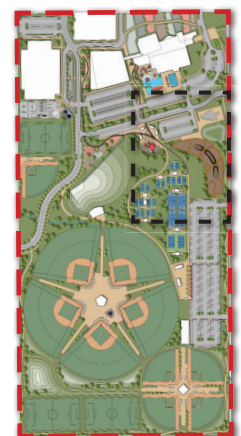
Staying consistent with the area, this Parks Master Plan update utilized the theme of dinosaurs and mining. The dinosaur interpretive walk takes you through the eras

of dinosaurs, ending with the meteor playground. This tells the story of how Vernal has developed by taking advantage of its history and natural resources.



- Themed Plaza & Pavilions
- Mined Out Meteor Crash Playground
- Dinosaur Footprint Skate Park
- Mine Theme Detention Pond
- X-Games Plaza
- Dinosaur Themed Pump Track
- Themed Path Tracks
- Large Leisure Lawn
- Large Activity Lawn
- Pickleball Courts with Covered Seating
- Multi-Use Path
- Basketball Courts

MAP KEY



Kay Memorial Park - Sports Courts & Fields

Part of this plan's purpose was to consolidate and enhance the existing amenity offerings. In keeping with that purpose several multi-use fields, congregated

sports courts, full size lap pool, and baseball/softball complexes were integrated into the park's design. These amenities will allow other areas to be enhanced and targeted at filling the additional amenity gaps that exist within the greater area.



Uintah County Recreation District

Parks Master Plan Update

Kay Memorial Park - Precedent Images

To help residents visualize how the Kay Memorial Park may look and feel the following precedent images

have been added. These offer clarity and design intent for the park's amenity offerings and theme.



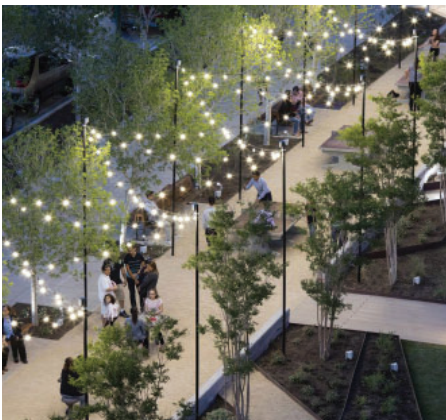
Interpretive Trail Signage



Outdoor Lap Pool & Water Park



Splash Pad



Educational Plaza



Outdoor Learning Pods



Themed Concrete Seating



Food Truck Plaza



Barbecue Plaza with Themed Pavilions



Hammock Park

Kay Memorial Park - Precedent Images

Although these images have been included to add clarity, the final design and construction of the park

may differ from what is featured below. These are included to guide the Park's development.



Industrial Arched Entryway



Skate Park (Dino Footprint)



Pump Track



Amphitheater with Hill Seating



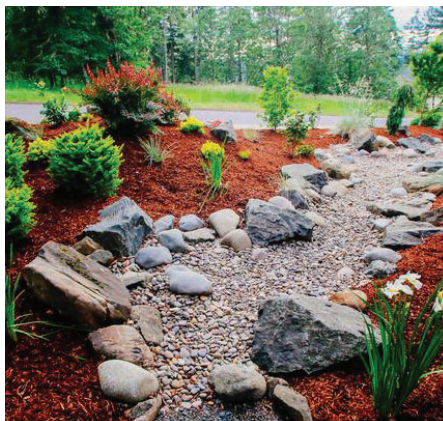
Baseball/Softball Field Complex



Parking Lot with (Solar Panel) Covered Parking



Botanical Garden



Faux Stream Bed



Bioswale

Uintah County Recreation District

Parks Master Plan Update

Kay Memorial Park - Precedent Images

These images also help residents and stakeholders visualize how the details and extra effects can bring

the park design to life and integrate with the character of the region and community.



Dinosaur Themed Playground



Industrial Themed Playground



Industrial Theme



Exterior Structures



Interior Structures

Kay Memorial Park - Precedent Images

These images offer clarity on the more functional aspects of the park including fencing, seating, signage, and lighting. They also help immerse visitors into the theme increasing the destination feeling of the park.



Fencing



General Elements



Outdoor Seating



Entry Signage



Wayfinding Signage



Theming Signage



Interior Lighting



Exterior Lighting



Plaza Lighting

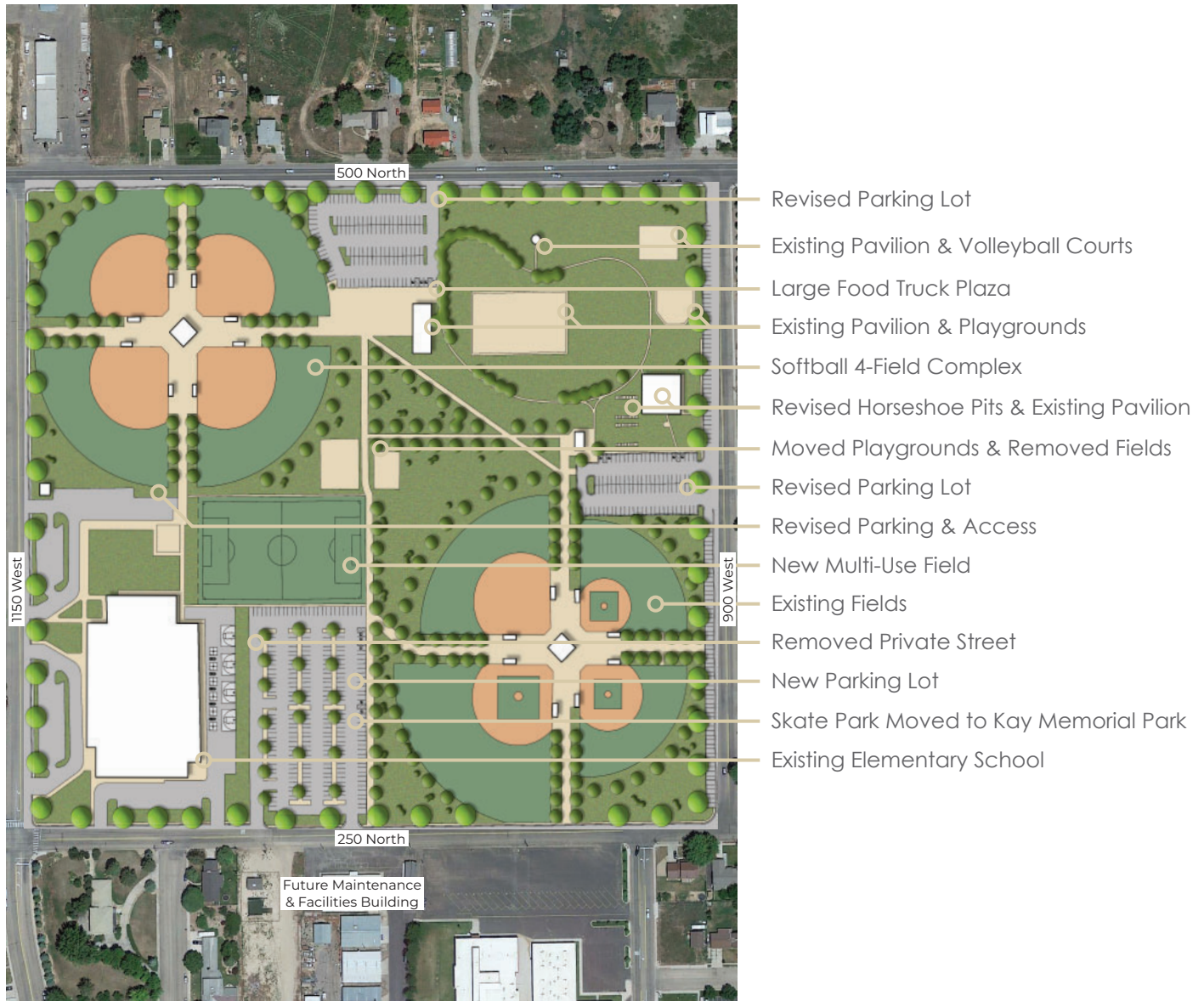
Uintah County Recreation District

Parks Master Plan Update

Ashley Valley Park - Overview

The Ashley Valley Park will remain relatively the same with the addition of parking, a softball field complex, multi-use field, moved playgrounds, and plaza space.

The skate park will also be moved to the Kay Memorial park. These adjustments are intended to improve some of the safety concerns that exist within the park.



Public Open House - July 14, 2022

KAY MEMORIAL PARK

OVERALL CONCEPTUAL PARK DESIGN



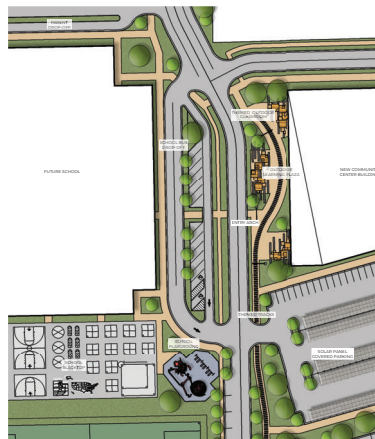
General Feedback & Amenities

- I love everything. I only wish it was already built. I can't wait for all of it.
- Overall concept is exciting! Scale seems a little too much. Coordination with downtown city revitalization efforts should be considered.
- Seems like too much is trying to be crammed into the area. What's the biggest priority with the area?
- Haven Estates neighborhood is being slaughtered!

- Dog park, fenced in.
- Can they move the school to the Cartral Cave area – freeing up more space for parking.
- Fire pits could be cool, love the plans here.
- Covered seating for parents.
- Retention pond should not be moved.
- I like the food truck plaza.
- Expand daycare inside and outdoors.
- Love everything here, hammock park, food trucks, theater.
- Sledding in town will be a fun and exciting family attraction.
- Why another sledding hill?
- Drop off pick up area!
- Drop off and pick up area

Shade & Covered Seating

- Cover the parks – future and current > kids are burning their bottoms.
- Covered area for parents and families to sit out of the sun.



Waterwise Design

- I'd love to see xeriscape local plants.
- Love botanical garden arid ideas.
- Please use xeriscape low water turf/plantings.
- Use drought tolerant turf mix, plants, trees xeriscape principles.
- Botanical garden is a fun addition to the main street flowers tourism draw for the area.
- Why so much grass? Drought?

Noise & Safety

- Sound buffer for fields. Trees trees trees; structures keep noise out of neighborhood!
- Make road golf cart path size if needed. No base fields. If base fields a 10' tall fence along the whole backside of all houses so no vandalism happens to backyards, fences, gardens ext.
- Would curfews come into affect? Amphitheater? Skate park? Worried about noise and loitering.
- Heavy traffic nuisance lights, unruly behaviors, blocking access.

Theme & Design

- Love the link to the mining history!
- Beautiful!! It's about time this is getting developed!
- Love the design attributes for dinosaurs and mining history/industry.
- Great themes.
- Like this style light. They can be "dark sky compliant."
- Incorporate dinosaur and mining theme in outdoor daycare space.
- We appreciate your desire to insert hardscape historical elements including dinosaurs and mining into the plan - reminding us of roots to the area as well as being very attractive! Great posters on those items. Botanical gardens in xeriscape form a big bonus!

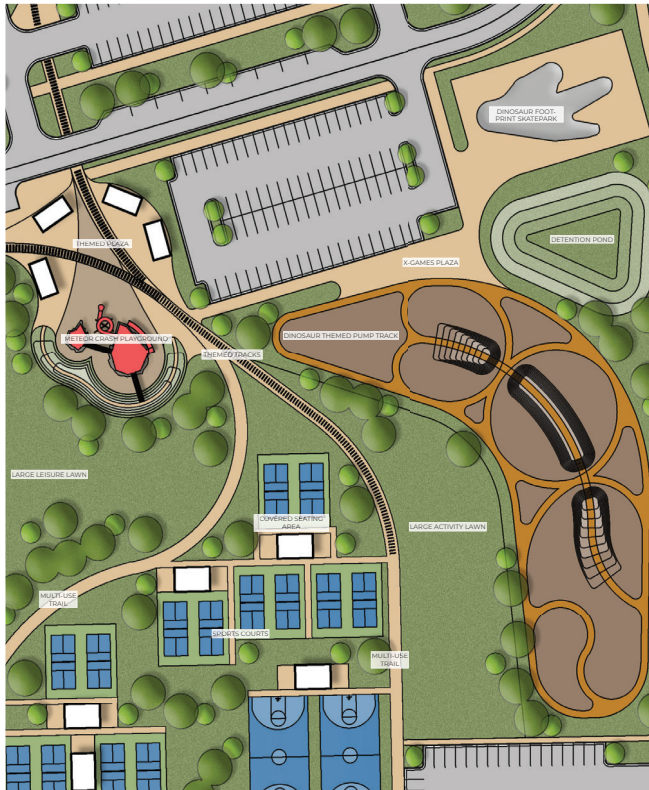


Uintah County Recreation District

Parks Master Plan Update

Golf / Putting Green / Disc Golf

- No baseball. Miniature golf.
- Scrap the monster softball field complex and put in an executive 9 course!
- Putting green and/or driving range. Yr round income.
- Putting green and walking park.
- Frisbee golf would be awesome
- Disc golf? 9 holes, play exterior of property.
- Where is the Frisbee golf course?



Sports Courts

- Is there anyway we can add more tennis courts? They are gonna put 8 pickle ball courts next to VMS and I don't think we need 4 basketball courts. My suggestion would be 12 pickle ball, 6 tennis and 2 basketball.
- More tennis court.
- More tennis courts please! Phase 1 = pickle ball Please Please Please.
- Why so many pickle ball courts? Where are the basketball and sand volleyball courts?
- Timed lights for pickleball courts. Check out St. George does theirs.
- What about the other location already approved? (Pickleball Courts)
- Sand volleyball courts – yea lite night.

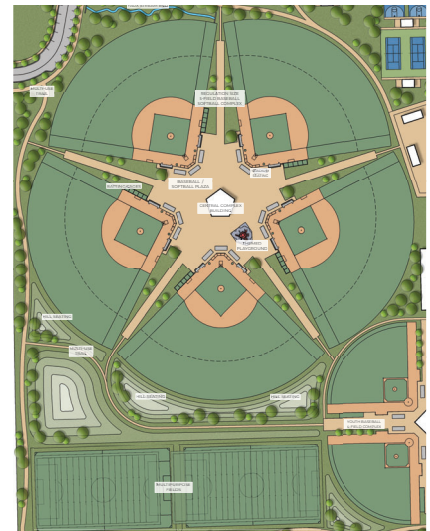
- Volleyball courts
- Any space for some sand volleyball? Trade something? In town tournaments...
- Racquetball :D
- Happy to have sporting activities/courts, but this seems a little excessive....?
- Pickleball is the fastest growing sport in the US. Hopefully these get built quickly.
- The amount of pickle ball courts seems excessive

Skate Park & Pump Track

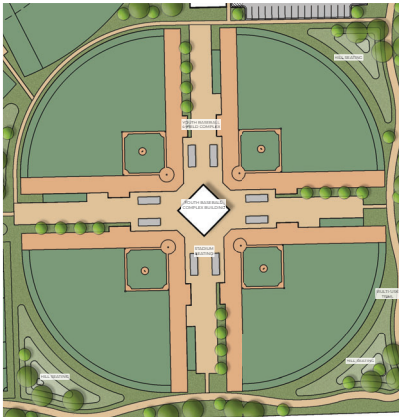
- Super excited about the skate park and pump track.
- Skatepark/bike park min square footage 20,000 sq ft. Example: Heber City, UT Draper, UT, Layton, UT, Whitefish, MT. Pump track- possibly asphalt instead of dirt- maintenance will be high on dirt, asphalt has low maintenance and can be changed easily for expansion. Is the skatepark for skateboard/BMX/scooters etc. I believe it's important to include all. If the pump track is asphalt, scooters, BMX mtn bike, skate can also use it. Also propose the skatepark to include 48t – 12 foot quarters and bowls. To help progress the talent this community possess.
- Drugs misuse of skate park.
- Pump track should definitely be dirt.
- Picnic tables – shade pavilions – near bike park – see trackline bike park in Ogden for inspiration.

Baseball / Softball Fields

- The ability to have our locals continue to enjoy sports without having to pay to travel every time benefits more than the individual but the community.
- No ball fields.
- Historically aren't ball fields placed on the outskirts of town? Not in residential area.
- Lighting at ball fields should be manual and not on a timer.
- Hours? Will these be open to practice on?



- More ball fields are a great idea. Great revenue for all aspects of town.
- This should not be about ball fields, esp not next to houses.
- Looks awesome!
- More playground vs softball.
- No softball/baseball here. Replace with dog park, mini golf, sand volleyball, more tennis courts, less pickle ball, more playgrounds and shade.
- Taxpayer should have been surveyed on what uses. Not everyone loves baseball. This is in the middle of town with all night games.
- Get rid of the baseball/softball fields here – it is residential.
- The amount of revenue potential is unbelievable. The ability to stay home and have the same opportunities is the way it should be.



- Fix Naples softball and then there is no need for this!
- Ballfields bring in alcohol, unruly behaviors, nuisance lights.
- Ball fields are great for youth and adult sports and revenue.
- One person or board should

not dictate # of ball fields – do not include in this residential area!

- We do not need more baseball softball field.
- Softball complex that is up to the standard of the baseball complex will show the girls they are just as important! Definitely needed! So exciting, but if softball fields at 500 N in Naples are improved may not be necessary.
- No to more ball fields.
- Is this a softball park or a baseball park? We need a softball complex, but we don't need more baseball.
- Why so many ball fields? 2 soccer fields? We already have a lot of base ball fields.
- Public access to ballfields. Shouldn't be locked to the public if public pays for it.
- H.R. fence too close!
- Ball filed should not be next to backyards! Liability intrusion please move them.
- Do not want this huge 5-plex in our backyards of 250 W
- Repair & Replacement.

Bathrooms

- Don't forget bathrooms!! In smart areas, little kids can easily access.
- Additional restrooms
- Don't close the bathrooms during the winter.

Financing and Maintenance

- Why punish the benefit that could be with what you're afraid it would turn into. Push the rec to manage better.
- Build in huge 2x or 3x planned maintenance \$ current facility is shown in gage!
- Don't build something you can't pay to maintain. Softball is not enough for pay, benefits, materials needed repair/replacement.
- Don't want this park to be about money. Please build smart so this is an effective and efficient park that adds community value.
- So many benefits when managed properly.
- Who is going to maintain all the plants and property?
- Current rec center is not maintained \$ wise- can you afford the addition wage/benefits?



Pool / Splash Pad

- Covered pool or indoor lap pool.
- I'd like to see a larger or multiple outdoor pools.
- You need more lifeguards and better pay.
- Cover pool.
- The most exciting part of this plan for our family is the outdoor pool and splash pad

area. We go to Roosevelt every summer to have this experience with our family.

- Also are we going to start paying your guards back for the class they have to take?
- Are we going to start paying lifeguards better so we can keep all the pools open?
- Love the 50m pool/cover.
- Swim is a winter season sport at the high school so are you going to cover the meter pool?

Uintah County Recreation District

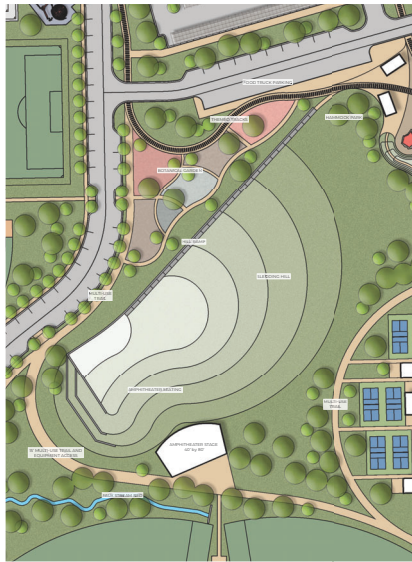
Parks Master Plan Update

Trails

- Trails and paths for walking, running and biking. 3D archery range?
- Some type of separation from the walking path and the residents' back fences?
- Will the trails be paved, dirt, rock?
- I love the bike trails

Traffic

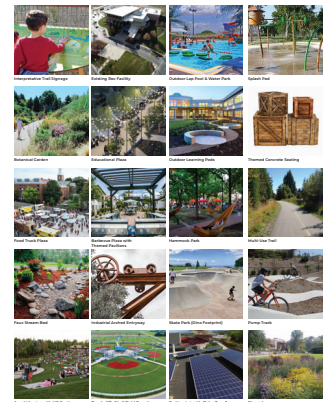
- Traffic issues with roads – lots of little kids running around. So many safety concerns!
- Has an impact study for traffic been completed for school access?
- We do not live in a large city. Spread this out! You will have to much congestion here.
- DO NOT want people parking in my front yard! DO NOT WANT TRAFFIC in our neighborhood.



- Close the road and make it a walking entrance ONLY! No parking signs along 775 West for the neighborhood. This is a residential area and should NOT be an entry point for thousands of vehicles on a daily basis.
- No ROAD (775 South). Walking entrance only.
- We see an issue of this being a road (Connection to 775) bringing traffic into the neighborhood. I think that it would be a great trail, but can see issues with a lot of traffic in a small neighborhood.
- No road (775 South) walking access
- Walking entrance at Haven Estates.

Parking

- Parking lot is right by Silver Pines apartments, high crime rate, break ins ext. To much grass.
- Add solar panel parking car ports to the rest of the parking lots.
- Tournament parking in neighborhood will be horrible.
- Great ideas! But. Really short on parking stalls also, the new parking is all pretty much in one spot. – Can we spread it to several areas instead of just one.
- EV charging.



775 South Access

- NO drive thru in Haven Estates
- Haven Estates is Not at drive thru.
- No car entry on 775 South. Not safe.
- Lots and lots of speed bumps! Please close this access point! It's dangerous to our kids.
- Speed bumps down 775 S into new entrance. Round about at entrance at 775 S.
- This should not be an entrance due to children safety! Our kids play out front and the amount of traffic that will be caused due to this entrance will put our children in danger. Close the access point and make it a walking entrance only! Make a cul-de-sac or turn around are on the park side so people who have parallel parked can turn around and leave without going through our neighborhood.
- The access point off 775 is worrisome and seems like it's not needed.
- 775 South should be just for bikes/pedestrians.
- Concerned about the entrance from 775 South. Would like foot traffic entrance only. 775 is already too busy for safety.

ASHLEY VALLEY COMMUNITY PARK OVERALL CONCEPTUAL PARK DESIGN



- Love the additional parking
- Shade around the parks and more bathrooms. Love the new layout.
- Please don't forget shaded seating spots near playgrounds for parents.
- Fan of all the trees.
- Good work to

all who have come together to make it to this stage.

- Vernal needs disc golf. Affordable. Accessible. Flexible!
- Disc golf course.
- What about a splash park area for hot summer days?
- Absolutely long overdue!
- Allow access to all ballfields! Fix Naples fields.
- More ball fields?? No!
- No more baseball!
- Baseball and softball fields make money for the community, the more fields the better!
- With the right facilities all sports can bring money to the Basin.
- How much \$?
- Not that much \$!

UINTAH COUNTY REC DISTRICT

OPEN HOUSE EMAIL RESPONSES SYNOPSIS

Email 1 – May 3, 2022:

“Our backyard parallels the back fields owned by the Rec district and Uintah school district. We and many of our neighbors who back up to the field are very concerned with the recent plan...Our obvious concern concerns the softball fields which point straight at our backyards. I am told that the community is in need of more softball fields of which I am not aware. Ashley softball fields, Naples and others now host all of the games I am told. I am not sure why, in respect to your neighbors, that the softball fields are not planned on the side of the field by Vernal Ave and the parking lots? At least there is a road which then separates the field from the residential setting... We realize that we do not own the field behind us, but the design and use of it should hopefully be determined by the community...Please reconsider the placement of the softball field 5-plex design on this side of the field and instead place it next to Vernal Ave. Nothing has been initiated yet and so there is a chance to do right by the adjacent residential neighborhood. Liability of broken windows, overhead bright lights and being hit by balls in your backyard has been discussed by the residents.”

Email 2 – July 6, 2022:

“Our neighborhood does have concerns and as you can imagine they relate mainly to the ball fields next to our backyards as far as the liability to our homes/ safety of children, outfield and home base lights pointing toward our backyards late at night and possibly high fences next to our backyards impeding our existing views. Our backyards are very small as it is. We had suggested the possibility of moving the fields over to the Vernal Ave side which would then

have parking lots and a street (Vernal Ave) between fields and the apartment complexes. We all bought our homes with this view and obviously hoped to maintain it. Community neighbors will I hope keep the residents in mind as well as their properties.”

Email 3 – July 15, 2022:

“We want to thank you for ALL of the time you gave us and presentations you set up last night re: the Recreation board plans for Kay Memorial Park. It was very informative to all of us and I do realize that we all gave you an immense amount of responses and outrage. It's our neighborhood and we obviously feel protective of our surrounding area, safety of children, amount of traffic this will produce, lighting issues and proximity of large ball field structures next to our backyards which none of us expected when we bought our properties. No one in our neighborhood wants a huge 5-plex ball field in their backyard... My point was to thank you for the evening and for respectfully listening to our concerns and responding to us.

Email 4 – July 15, 2022:

“We appreciate your desire to insert hardscape historical elements including dinosaurs and mining into the plan - reminding us of roots to the area as well as being very attractive! Great posters on those items. Botanical gardens in xeriscape form a big bonus!”

Email 5 – July 17, 2022:

“I was out in the community and parents asked why so many softball fields and only 3 soccer/lacrosse fields. They would need at least 1 more to hold tournaments. Can the softball/baseball fields be configured to 4 in the complex and free up space for another multi-use field? I also noticed in prior updates that a previous outdoor pool was closed during the summer due to heating up.”

UINTAH COUNTY REC DISTRICT

SPECIAL THANKS

As part of this process we wanted to give a special thanks to the Uintah Recreation District, the Uintah County Library and Community Center for allowing us to use their facilities to hold events, meetings, and gather information for these projects.

UINTAH COUNTY REC DISTRICT

PARK MASTER PLAN UPDATE

KAY MEMORIAL & ASHLEY VALLEY PARK

AUGUST, 2022



Jones & DeMille
Engineering



Recreation District

Where fun comes naturally.



PSOMAS